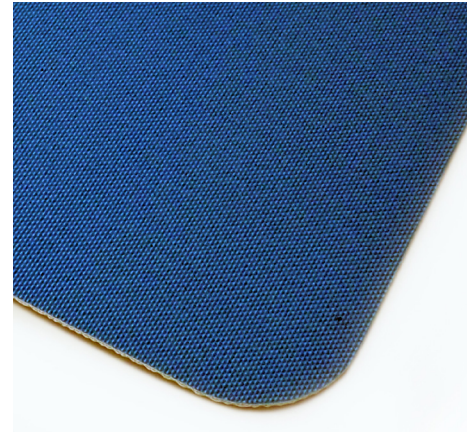


PN SURFACE



| TEXTILE CARCASS | | CONVEYING SURFACE | DRIVING SURFACE |
|------------------|------------------|-------------------|---|
| Material: | POLYESTER | Material: | TPU |
| Number of plies: | 2 | Thickness: | 0,2 mm |
| Fabric: | RIGID | Surface: | PN |
| | | Color: | WHITE |
| | | Hardness Shore A: | - |
| | | (+/- 5) | |
| | | | Material: FABRIC WITH TPU IMPREGNATION |
| | | | Thickness: - |
| | | | Surface: FABRIC |
| | | | Color: LIGHT BLUE |
| | | | Hardness Shore A: - |

TECHNICAL DATA SHEET

| BELT THICKNESS | WEIGHT KG/M2 | WORKING LOAD AT 1% ELONGATION | MAX ADMISSIBLE PULL | MINIMUM PULLEY DIAMETER | | WORKING TEMPERATURE °C | ANTISTATIC |
|----------------|--------------|-------------------------------|---------------------|-------------------------|--------------|------------------------|------------|
| | | | | FLEXING | BACK FLEXING | | |
| 1,6 mm | 1,50 | 5 N/mm | 10 N/mm | 8 mm | 16 mm | -30 / 110 | YES |

MOST POPULAR APPLICATION

